



# WASH Governance of River cities Using PAS-SLB framework

August 2022





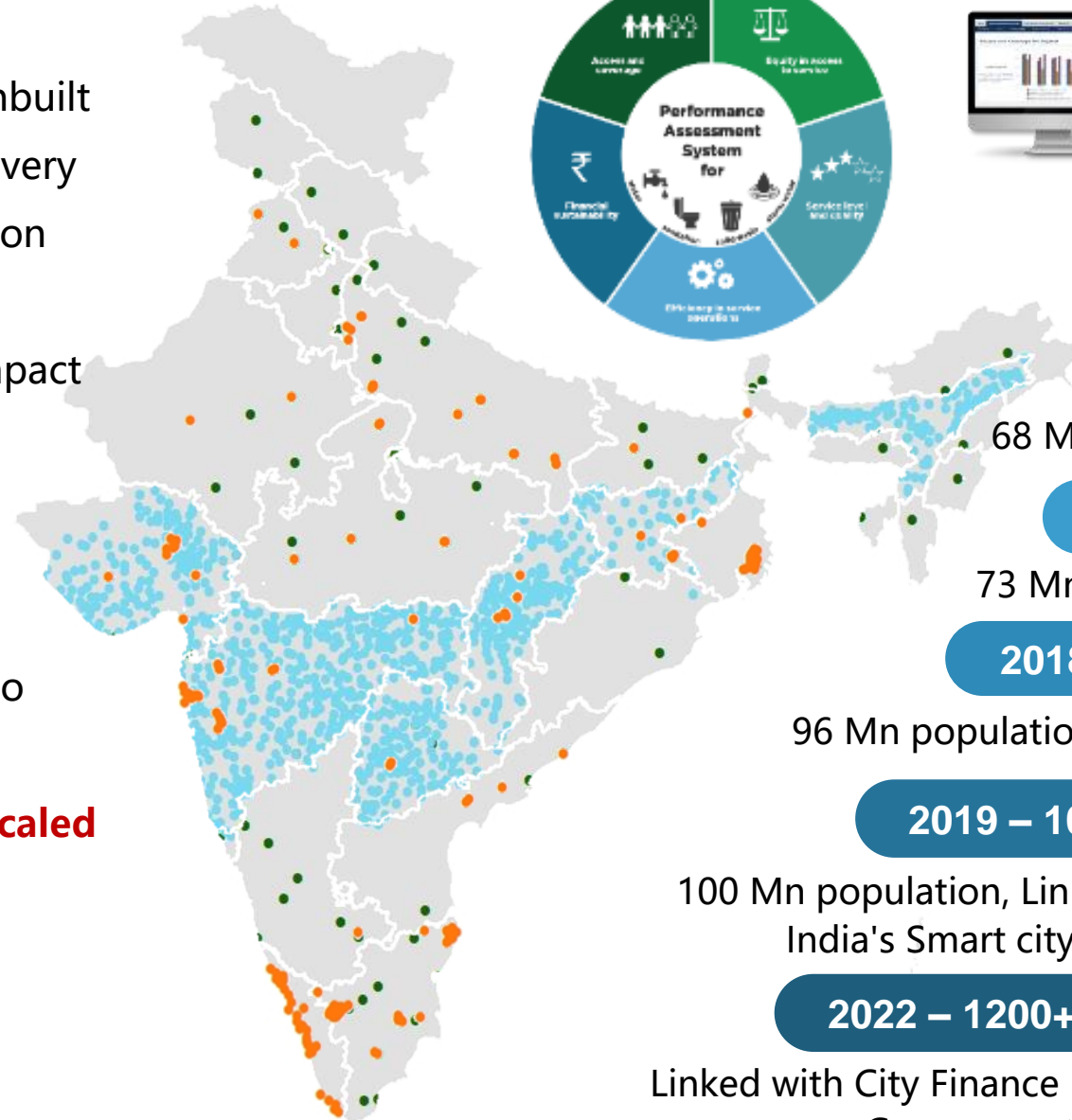
# PAS – Performance Assessment System for UWSS in India

## ABOUT PAS

- **Digital platform for self assessment** with inbuilt validation checks to measure the service delivery
- **Framework suited to local context** - Focus on efficiency, equity and on-site sanitation
- **No Pilots.....operate at Scale** to make an impact

## NATIONALLY OWNED AND AT SCALE

- **Not a 'project' but a 'programme'** to mainstream it in governments
- **Work with all three tiers of Governments** to influence policies and implementation
- **Started with 400+ cities** in 2008-09 , **now scaled up to 1000+ cities** across India
- One of the **largest open access time series database** for urban water and sanitation



2009 – 416 cities

68 Mn population, 2 states

2015 – 463 cities

73 Mn population

2018 – 900+ cities

96 Mn population, 6 states

2019 – 1000+ cities

100 Mn population, Linked with India's Smart city mission

2022 – 1200+ cities

Linked with City Finance Portal of Government of India

# The 6 Themes of River cities using PAS Framework



## Policies, Planning and Implementation

- Pro-poor policies for service delivery
- Long-term policies and plans for WASH service provision
- Use of capital receipts



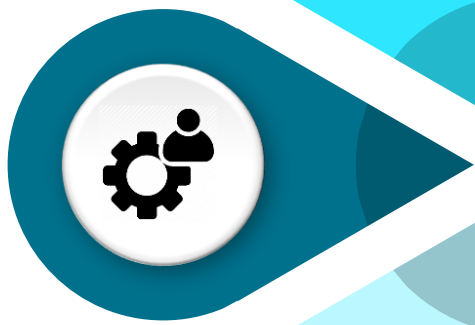
## Citizen and Community Outreach

- Effectiveness of consumer grievance redressal mechanisms
- ULB Website



## Adequate, Inclusive and Smart Administration

- Staff availability
- Digital platforms



## Inclusive sanitation

- Coverage of IHHT in slums
- Coverage of IHHT
- Coverage of HHs with IHHT
- Adequacy of treatment capacity
- Extent of reuse and recycling



## Adequacy, Equity and Efficiency in Financing

- Adequate budget for universal coverage
- Adequate budget for O&M expenditure
- Cost recovery
- Collection efficiency



## Accountability and Monitoring

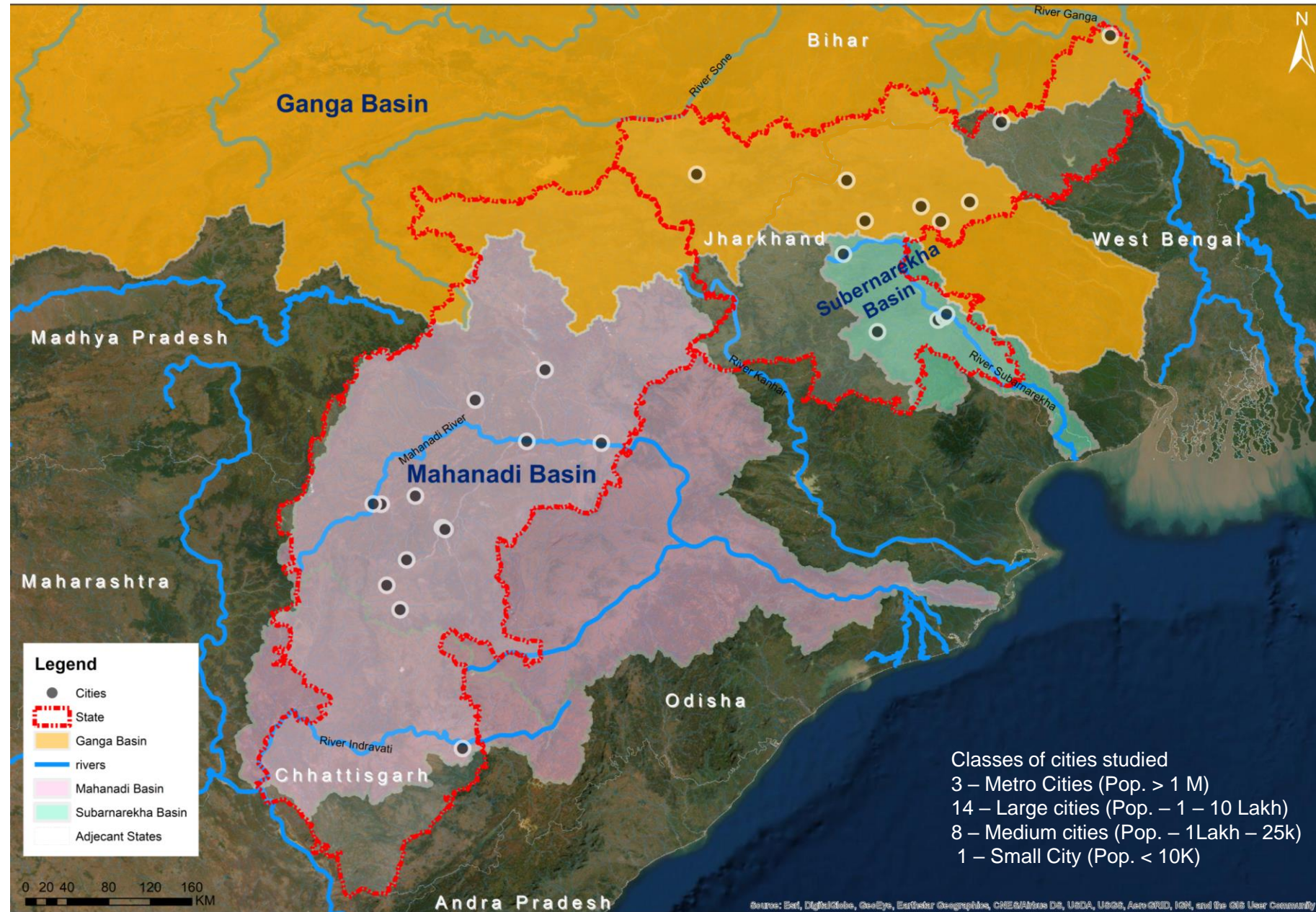
- Audits of municipal accounts
- Regular monitoring & reporting on service delivery
- Reliability of reported monitoring





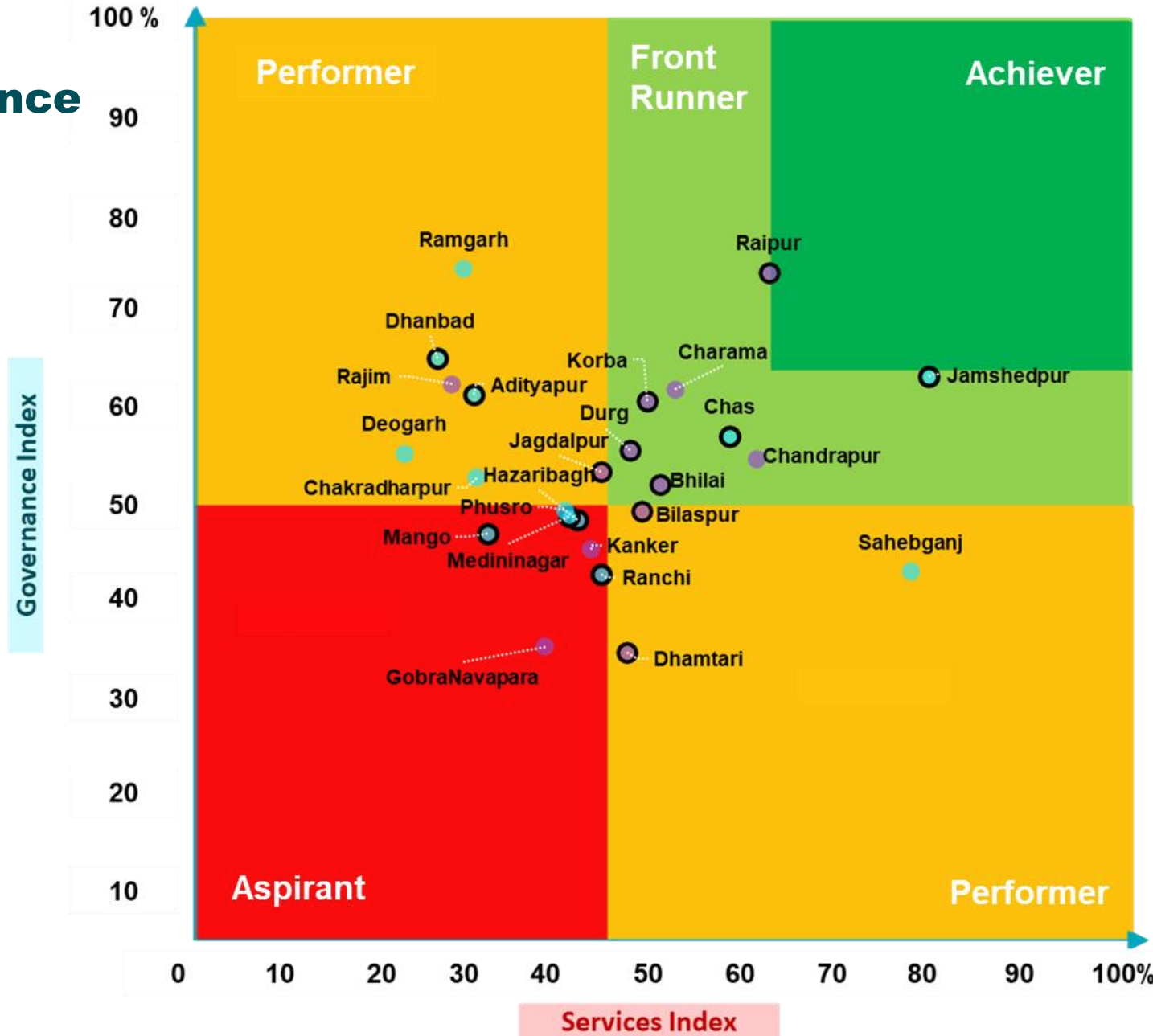
# River basins at Chhattisgarh and Jharkhand: WASH assessment for selected 26 cities

- Assessment of 26 river water cities of Chhattisgarh and Jharkhand located in the three river basins namely, **Ganga, Mahanadi and Subarnarekha**
- River cities covers **9 million population** (50% of urban population from these two states.)



# Cities seem to be performing well in ensuring coverage of access but finance emerges as a key area of concern

- An assessment of 26 cities using the Governance Index vs Services Index provides as an **advocacy and decision support tool** for local government.
- Cities have performed well in **inclusivity mandate and policy's theme** resulting in higher access and coverage in water and sanitation services.
- **Financial sustainability at local level** and lack of **waste treatment infrastructure** emerges as key areas of concerns and attention also needed for policy, administration and disaster resilience.
- **Larger cities** are **performing well** given the higher access to resources and management capacity. Need to focus on **strengthening capacity of small and medium towns** for resource planning and management





**CWAS** CENTER  
FOR WATER  
AND SANITATION

**CRDF** CEPT RESEARCH  
AND DEVELOPMENT  
FOUNDATION

**CEPT**  
UNIVERSITY

## About us

The Center for Water and Sanitation (CWAS) at CEPT University carries out various activities – action research, training, advocacy to enable state and local governments to improve delivery of services.



[cwas.org.in](http://cwas.org.in)  
[pas.org.in](http://pas.org.in)



[cwas@cept.ac.in](mailto:cwas@cept.ac.in)  
[tiny.cc/pasenews](http://tiny.cc/pasenews)



[CEPT\\_CWAS](https://twitter.com/CEPT_CWAS)



[cwas.cept](https://www.instagram.com/cwas.cept)



[cwas.cept](https://www.facebook.com/cwas.cept)



[cwas-cept](https://www.linkedin.com/company/cwas-cept)